

## Patrol Organization

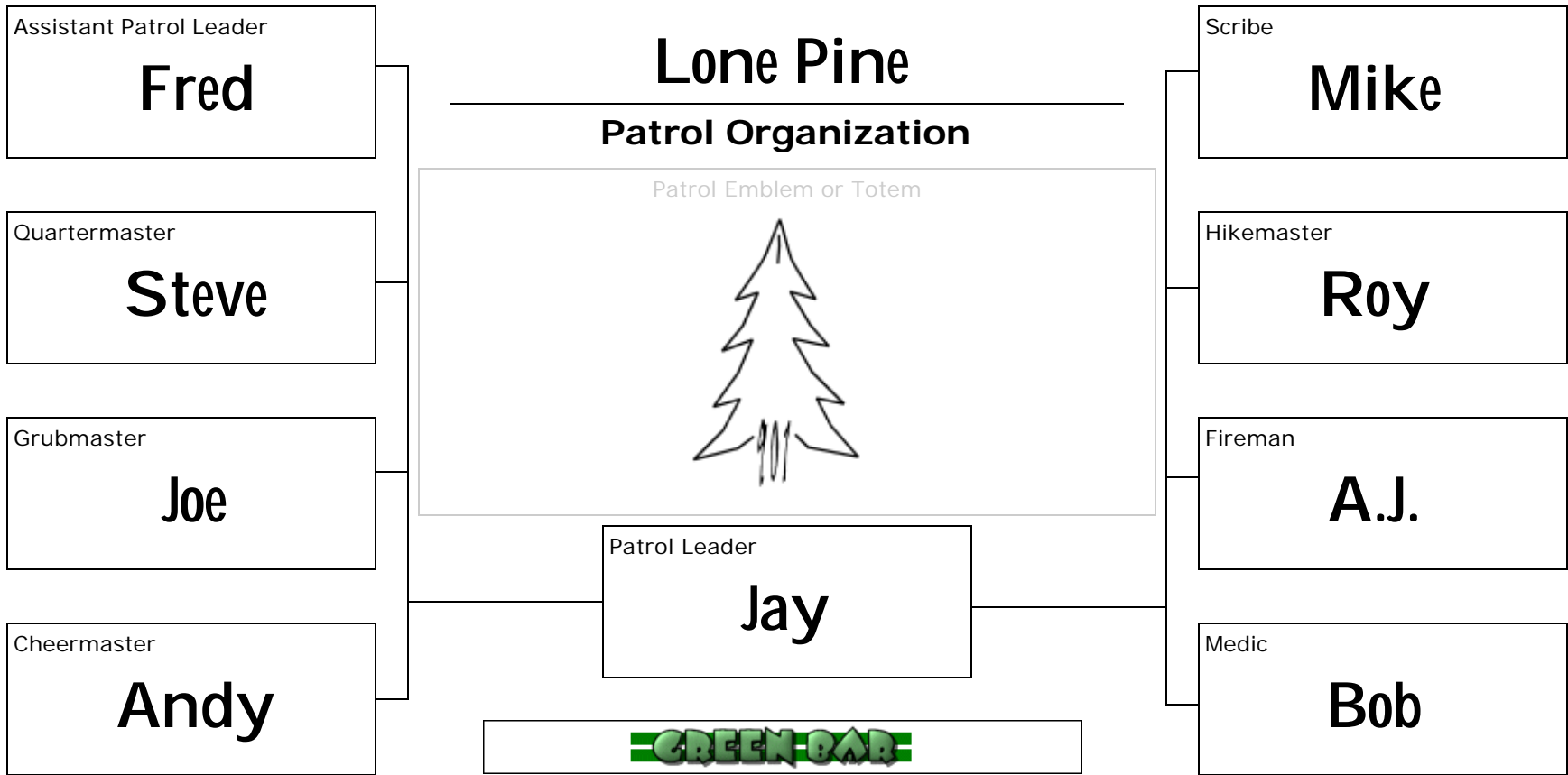
Patrol Emblem or Totem

Patrol Leader



<p><b>Patrol Leader</b></p> <p>Represents the patrol in the PLC. Represents the PLC to the patrol. Responsible for the conduct of the patrol.</p>	<p><b>Assistant Patrol Leader</b></p> <p>Helps the PL with patrol business and administration. Takes the place of the PL when he's not there.</p>	<p><b>Patrol Scribe</b></p> <p>Keeps patrol logbook, checks attendance, collects dues, keeps money records and patrol meeting notes.</p>	<p><b>Patrol Quartermaster</b></p> <p>Takes care of patrol equipment. Responsible for troop equipment used by the patrol.</p>
---	---	--	---

<p><b>Patrol Grubmaster</b></p> <p>Prepares patrol menus and food lists. Obtains food for hikes and overnights.</p>	<p><b>Patrol Cheerleader</b></p> <p>Leads patrol cheers and songs. Prepares patrol skits and stunts for campfires.</p>	<p><b>Patrol Hikemaster</b></p> <p>Plans details of patrol hikes. Makes sure the patrol hikes safely.</p>	<p><b>Patrol Fireman</b></p> <p>Responsible for ensuring patrol follows proper fire prevention practices.</p>	<p><b>Patrol Medic</b></p> <p>Responsible for taking care of the patrol first aid kit, and keeping patrol members fit and healthy.</p>
---	--	---	---	--



**Patrol Leader**  
Represents the patrol in the PLC. Represents the PLC to the patrol. Responsible for the conduct of the patrol.

**Assistant Patrol Leader**  
Helps the PL with patrol business and administration. Takes the place of the PL when he's not there.

**Patrol Scribe**  
Keeps patrol logbook, checks attendance, collects dues, keeps money records and patrol meeting notes.

**Patrol Quartermaster**  
Takes care of patrol equipment. Responsible for troop equipment used by the patrol.

**Patrol Grubmaster**  
Prepares patrol menus and food lists. Obtains food for hikes and overnights.

**Patrol Cheerleader**  
Leads patrol cheers and songs. Prepares patrol skits and stunts for campfires.

**Patrol Hikemaster**  
Plans details of patrol hikes. Makes sure the patrol hikes safely.

**Patrol Fireman**  
Responsible for ensuring patrol follows proper fire prevention practices.

**Patrol Medic**  
Responsible for taking care of the patrol first aid kit, and keeping patrol members fit and healthy.